

Oak Creek Low Water Crossing Capstone

Fawaz Alotaibi
Bruce Connolly
Devin Kelley
Hilary Sizemore



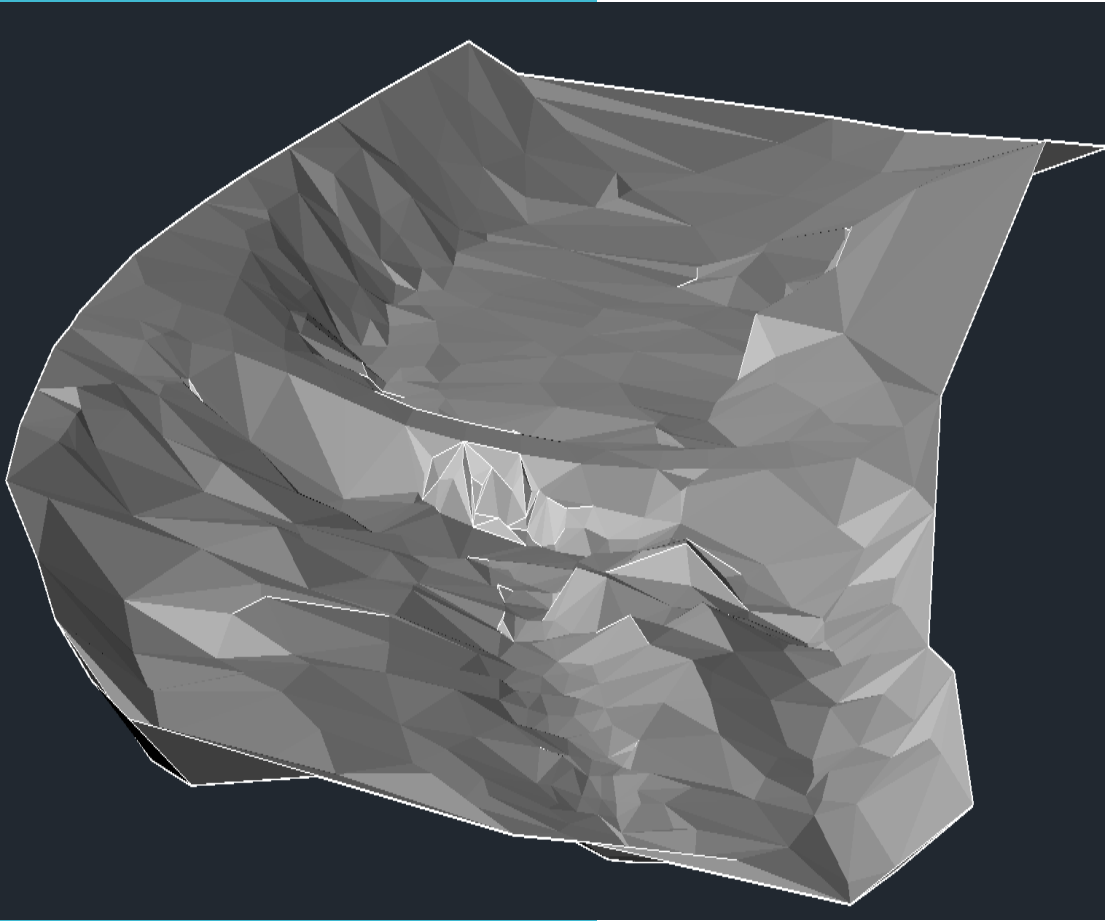
Gantt Chart Tasks

- ~~Research~~
- Modeling
 - ~~Project Survey~~
 - USGS Data
 - Gauge Data
 - HEC-RAS
- ~~Impacts~~
 - ~~Political~~
 - ~~Social~~
- Analysis
 - Geomorphology
 - AutoCAD
 - Hydraflow Express
 - Bentley Water Gems
 - Culvert Master
- Design
- Reports & Presentation
 - 50% Design Report

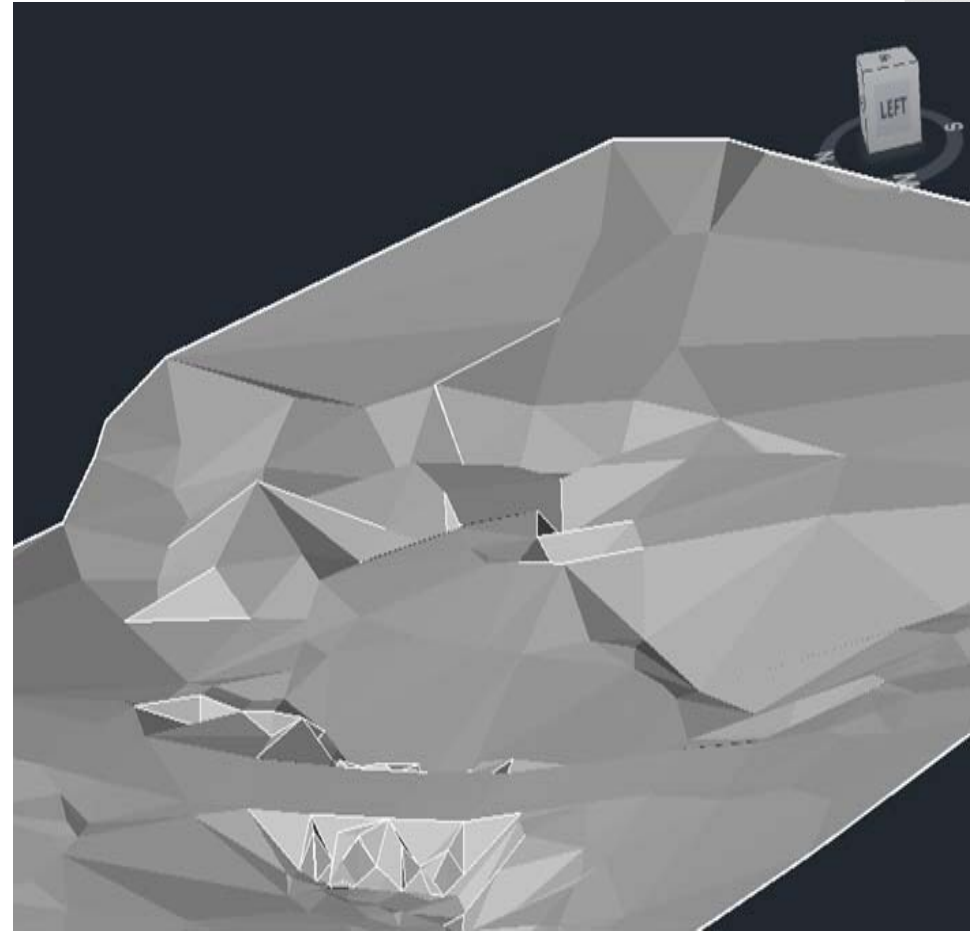
Past 2 Weeks (01/27-02/11)

- Finished Surveying Points
- Created Cross Sections for HEC-RAS
- Gathered Sedona Gage Data
 - Not using HEC-HMS
- Delineated Watershed
- Impacts
 - Social
 - Political

Finished Survey Topography



Looking Up Stream - Completed



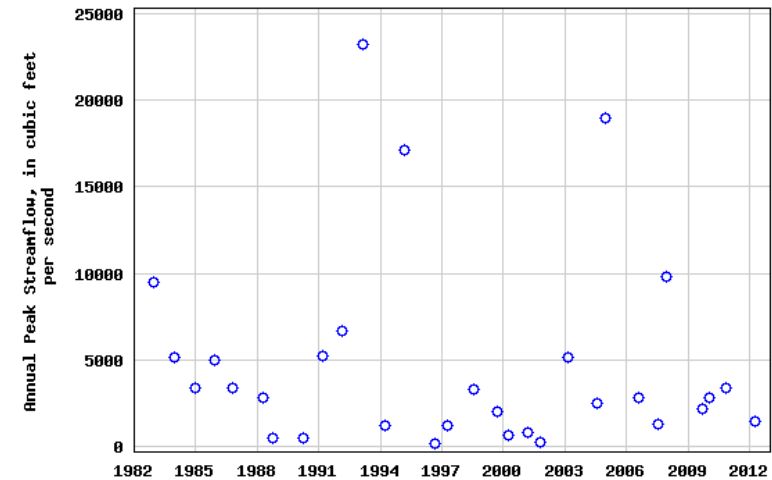
Looking Down Stream - Incomplete

Sedona Gage Data

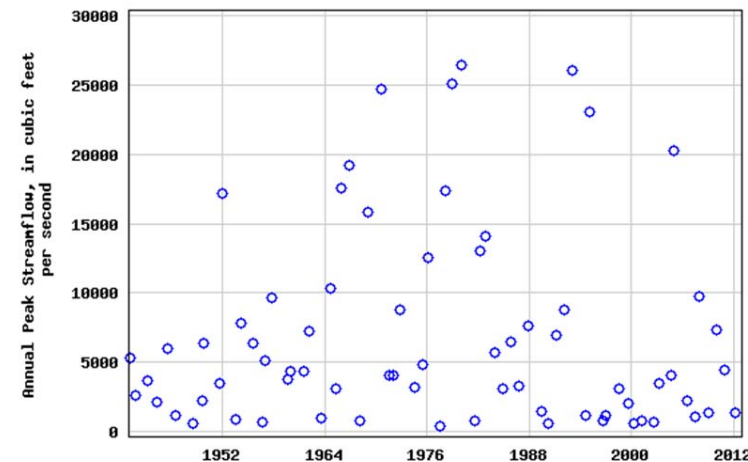
- Sedona gage station is below Shangri La low water crossing
- Gage data is available
- Removal of HEC-HMS
 - Possibility of errors
 - More convenient
 - Simple Area Regression



USGS 09504420 OAK CREEK NEAR SEDONA, AZ

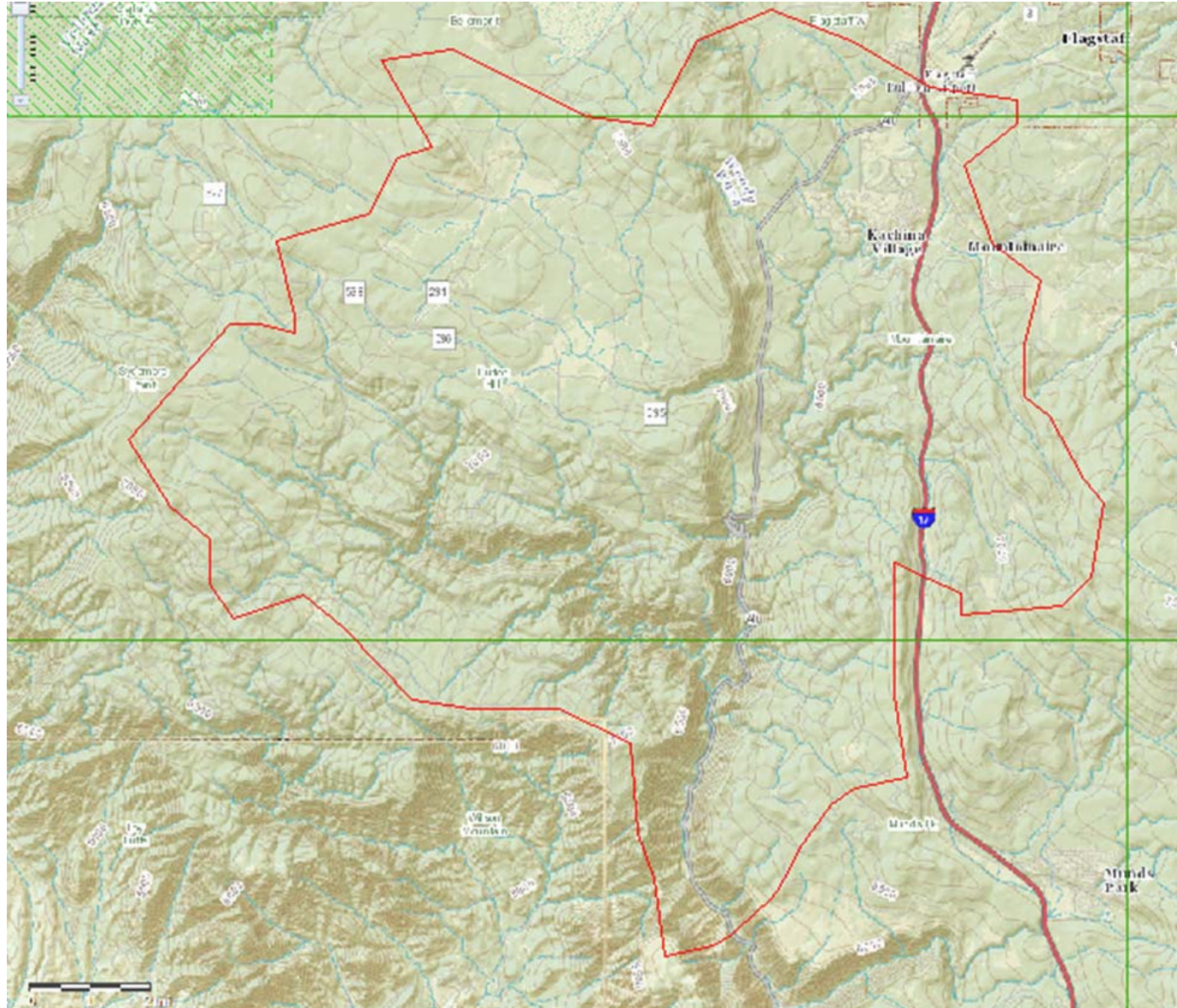


USGS 09504500 OAK CREEK NEAR CORNVILLE, AZ



Watershed Delineation

- Area = 140 sq. mi.
- Area Regression from Gage Data
 - ~ 60% from Sedona gage



Impacts

Social

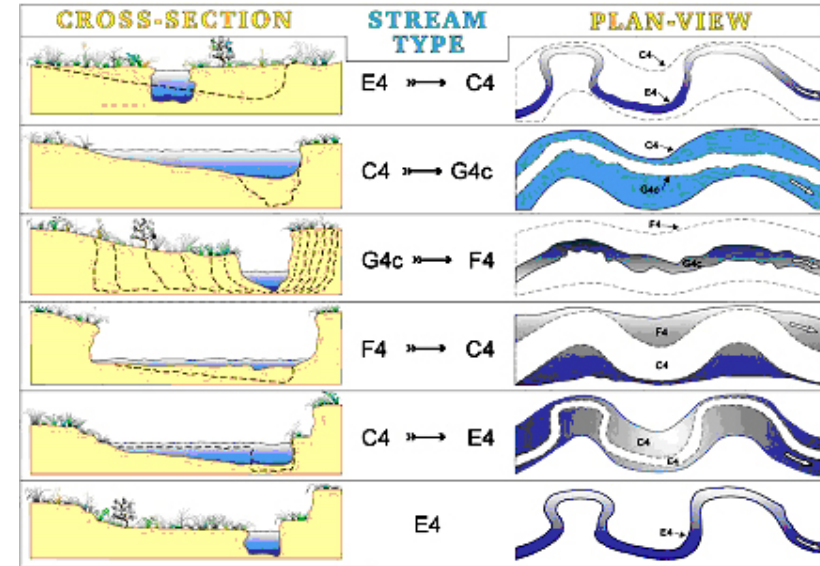
- Improved dependability on the crossing
- Higher property values
- Constant access
- Potential for safe working conditions in Oak Creek

Political

- Negligence and major changes to Oak Creek could result in legal actions taken by the community

Next 2 Weeks (02/11-02/24)

- Finish Interpreting Gage Data
- Finish HEC-RAS Model
- Start Analysis
 - Geomorphology
 - Culvert Master
 - AutoCAD
- Begin 50% Design Report



Rain and Snowmelt

